

# MAXIMUM PERFORMANCE. ACCURATE DOCUMENTATION.



ROWRENCH 30.73PSM - 7739900002  
Travelling gear - 5018200006  
Outrigger - 7730800001

**Exemption  
from the 1% rule**  
DB RIL824.5050

## THE ADVANTAGES. YOUR BENEFITS.

### Time saved, quality increased

- Measurement with integrated torque wrench
- Machine immediately ready to use due to measurement with integrated torque wrench
- No checking of measurement required
- The torque is measured electronically at the wrenching motor and not calculated from the hydraulic pressure
- Actuation by means of 2 push-buttons (unscrew/screw down)

### Intelligent calibration

- Self-learning and intuitive controller with target/actual value comparison
- Constantly high wrenching precision
- No manual recalibration on the worksite
- Annual check in own workshop or anywhere when on the move

### Minimised labour costs, wrenching made easy

- Faster wrenching
- High tightening/loosening torque for rusty rail fastenings and for dismantling screws without stalling the engine
- Selection of track type at the push of a button
- Height-adjustable and foldable guide handles

### Work result fully documented

- Recording of each wrenching process
- Captures wrenching frequency, kilometre marking and wrenching mode
- Recognises defective screws and damaged threads
- Output of coded results (log) via USB
- Verifiable performance protects against future claims
- Height-adjustable and foldable guide handles
- GPS link for precise information of working position to optimise reporting

### High operational safety

- Aluminium covers
- Low downtime
- Fewer spare parts and repairs
- No capital tied up in replacement machines



Control unit with colour display

## PRECISION WRENCHING

### The next generation.

The fully hydraulic precision power wrench ROBEL ROWRENCH 30.73PSM tightens and loosens every screw connection precisely to the specified torque. The combination of high spindle speed and high loosening torque accelerates the wrenching process, makes work easier and reduces costs. Independent of external effects, the ROWRENCH30.73PSM documents consistently accurate measuring results which are captured exactly where they are taken. Control measurements and reworking are no longer required.

## FOCUS ON THE OPERATOR

### Symbiosis of ergonomics and efficiency

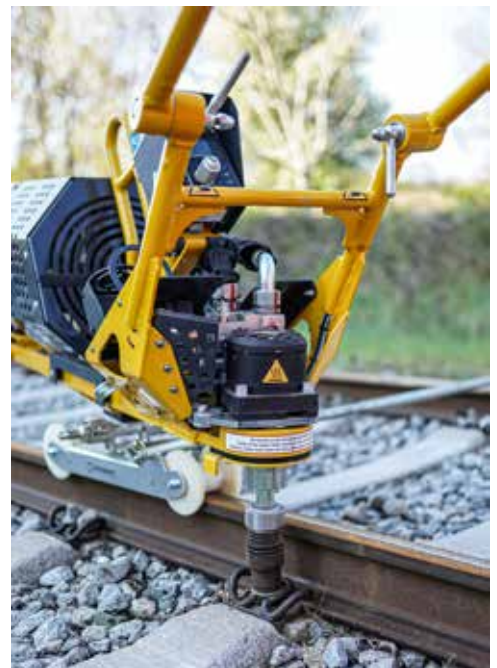
Ergonomic design ensures the long-term retention of the workforce. Employees benefit from better health, companies benefit from greater efficiency.

### The ROBEL ROWRENCH 30.73PSM provides

- Maximum operator safety and convenience
- Increase in work quality

### due to:

- Operator posture minimising discomfort
- Weight less than 100 kg
- Optimum machine balance
- Height-adjustable guide handles
- Safe 2-hand control



## SPECIFICATION

|   |                               |
|---|-------------------------------|
| Drive air-cooled                          | 4-stroke petrol engine        |
| Type                                      | Honda GX200                   |
| Output                                    | 4.3 kW                        |
| Spindle speed: adjusts automatically      | max. 205 rpm                  |
| Loosening torque                          | max. 900 Nm Loosening torque  |
| Tightening torque                         | max. 500 Nm Tightening torque |
| Torque base setting as per DB RIL824.5050 | up to 250 Nm                  |
| Dimensions (L x W x H)                    |                               |
| Transport position                        | 1530 x 500 x 670 mm           |
| Working position                          | 2090 x 650 x 960 mm           |
| Weight of machine                         | from 92 kg                    |
| Weight, monorail trolley / outrigger      | from 7 kg                     |
| Weight, transverse bogie                  | from 28 kg                    |

## OPTIONS

### 1. Travelling gear

- 5010820006 Monorail trolley (GX 200 engine, electric)
- 7730800001 Outrigger, gauge 1435 mm incl. counterweight and rail fastening (GX 200 engine, electric)
- 7730750001 Transverse bogie, gauge 1435 mm (60 mm height above top of rail, plastic rollers) for transverse bogie without cant



Other travelling gears and gauges available on request.

### 2. Extensions

for transverse bogie without cant:

- 7738950140 Transverse bogie, split, articulated sockets

### 3. Sockets

(see Socket Overview for other sockets)

- 8003062001 Hex AF 39 split, articulated socket with ejector
- 8003062017 Hex AF 41 split, articulated socket with ejector
- 8003062005 Rectangular 28 x 21, split, articulated socket



## ACCESSORIES

### USB stick

- 9008000057 Spare USB stick

### Torque meter attachment

- 7738950110 for annual calibration

### Torque wrench

- 9002501350 for annual calibration (set to 250 Nm)

### Oil change kit

- 7739910005 for easy change of hydraulic oil

### Travelling gear with rubber wheels

- 8320820001 for working in areas with slab track

### Transport frame

- 7738960001 universal setting (30.73, 30.82RKS, 30.82HKS, 30.82HKS E<sup>3</sup>, 30.83)

### Toolbox

- 8328980100 toolbox for fitting on transverse bogie

### Cover

- 9000100065 for weather protection



Travelling gear with rubber wheels 8320820001



Transport frame - 7738960001



Hood-shaped cover